

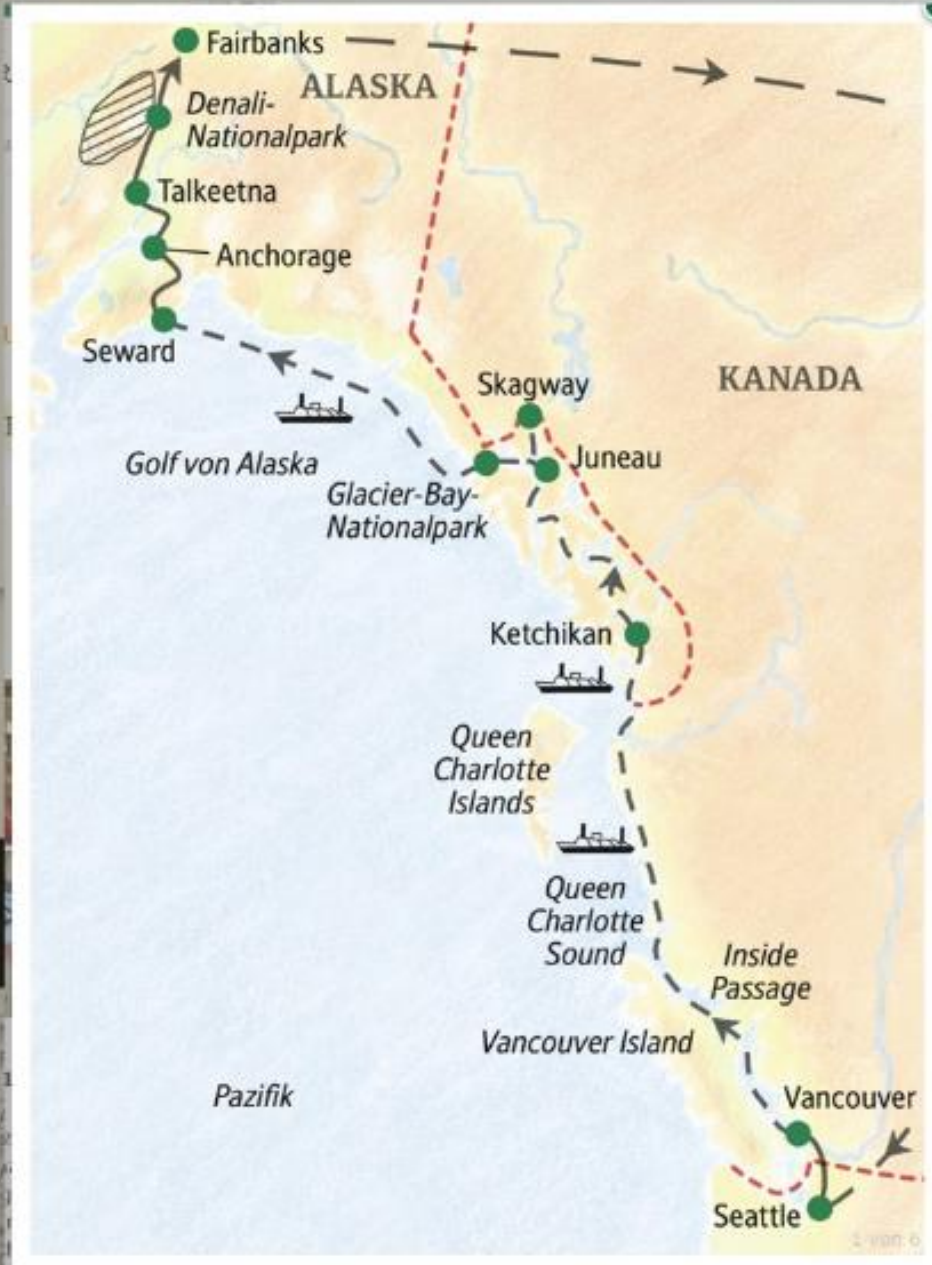
Welcome to  
*Alaska*

and the Gateway to the Klondike





# Studienreise Alaska 2015



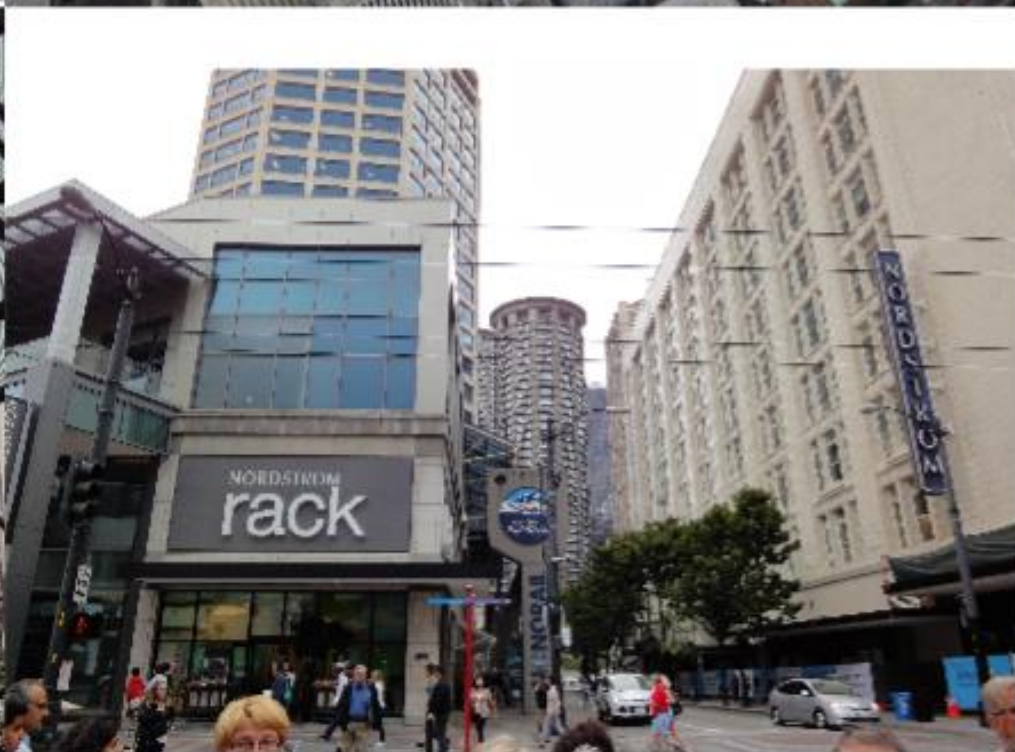




# Seattle











f Seattle



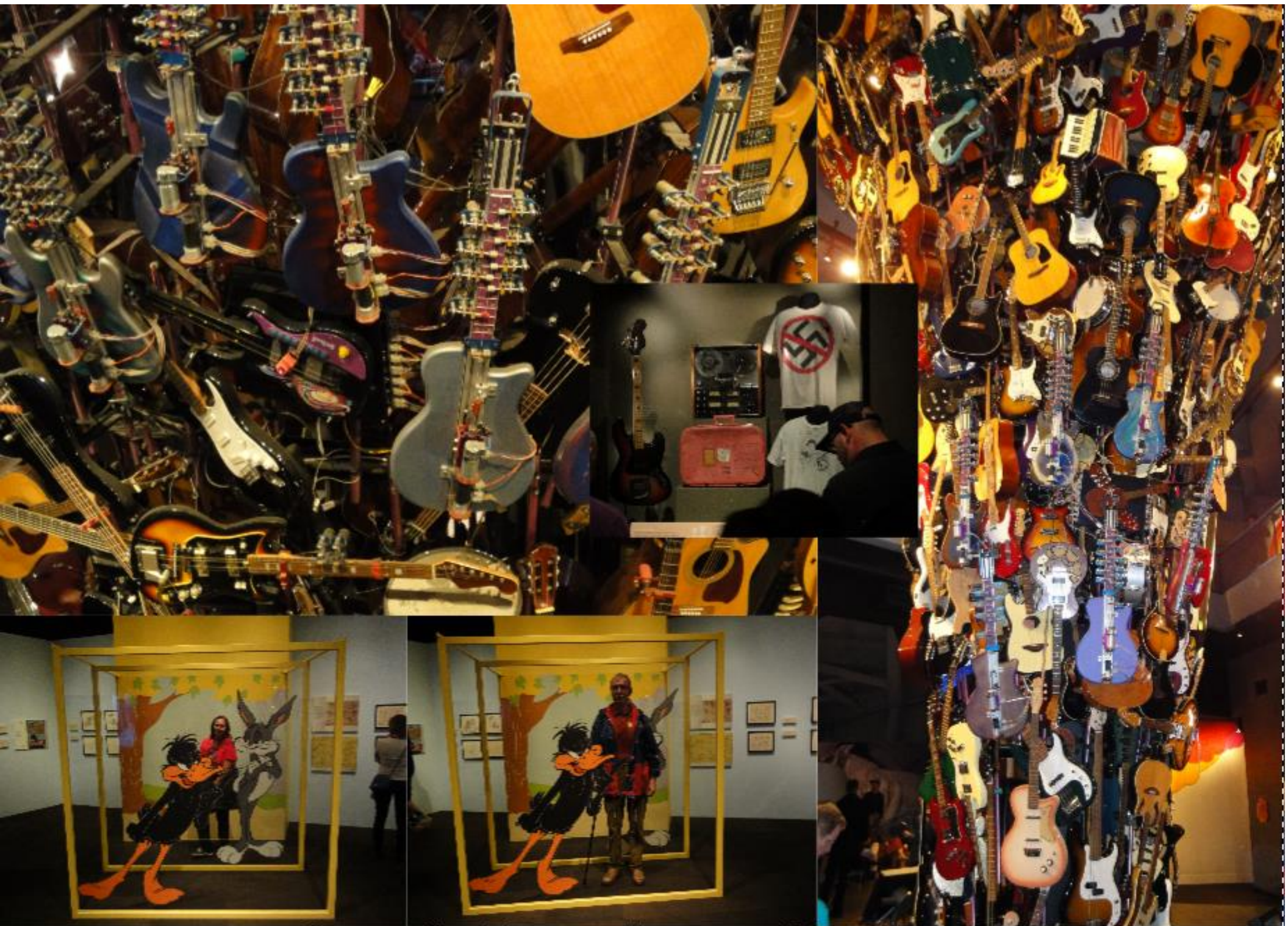




## Town of Seattle







**Seattle Experience Music Project**





**EMP MUSEUM**  
Entertainment Museum of Portland



**EMP MUSEUM**  
Entertainment Museum of Portland

**GALLERY GUIDE - MAP**

Explore some of the most significant moments in rock music, science fiction, and popular culture through EMP's impressive exhibitions and interactive installations.



**ABOUT THE BUILDING**

When world-renowned architect Frank O. Gehry led EMP, he was inspired to create a structure that evoked the rock 'n' roll experience without being too literal. He purchased seven vintage guitars, placed them on pedestals, and on their necks placed a window for an early rock 'n' roll club, and the building of EMP emerged as the museum's wildly undulating, brightly colored facade.

**BECOME AN EMP MEMBER TODAY!**

As an EMP member you're part of a dynamic and diverse community dedicated to our mission of music, culture, and ultimate variety in popular culture of our time. Enjoy access to EMP's member-exclusive benefits all year long including:

- Unlimited free admission for the year\*
- Invitations to exclusive previews and exclusive member-only events.
- Access to special discounts at EMP stores, cafe, POP Kitchen & Bar.
- Advanced seating, discounted, or free tickets to EMP's exciting programs.
- Subscription to EMP's monthly member email newsletter for special tickets and more deals.

Join today so you can spend more time inside the galleries and less time waiting in line.  
\*Weekends and holidays only.



**Mayflower Hotel**



**PERC** PORTLAND EXHIBITION CENTER

FUTURE PASSENGER

ROW	SEAT	CLASS	FARE	STATUS
214	P25	PRC	FOF	

BOARDING PASS

**Future of Flight**  WEDNESDAY AUGUST 14, 2013 **E**

**Future of Flight**  WEDNESDAY AUGUST 14, 2013 **E**

**Future of Flight**  THURSDAY AUGUST 15, 10:00am Tour **E**

**Future of Flight**  THURSDAY AUGUST 15, 10:00am Tour **E**





# Vancouver mit Chinatown





# Chinatown





# Vancouver alt und neu





# Vancouver neu







## Unser Hotel in Vancouver







Vancouver







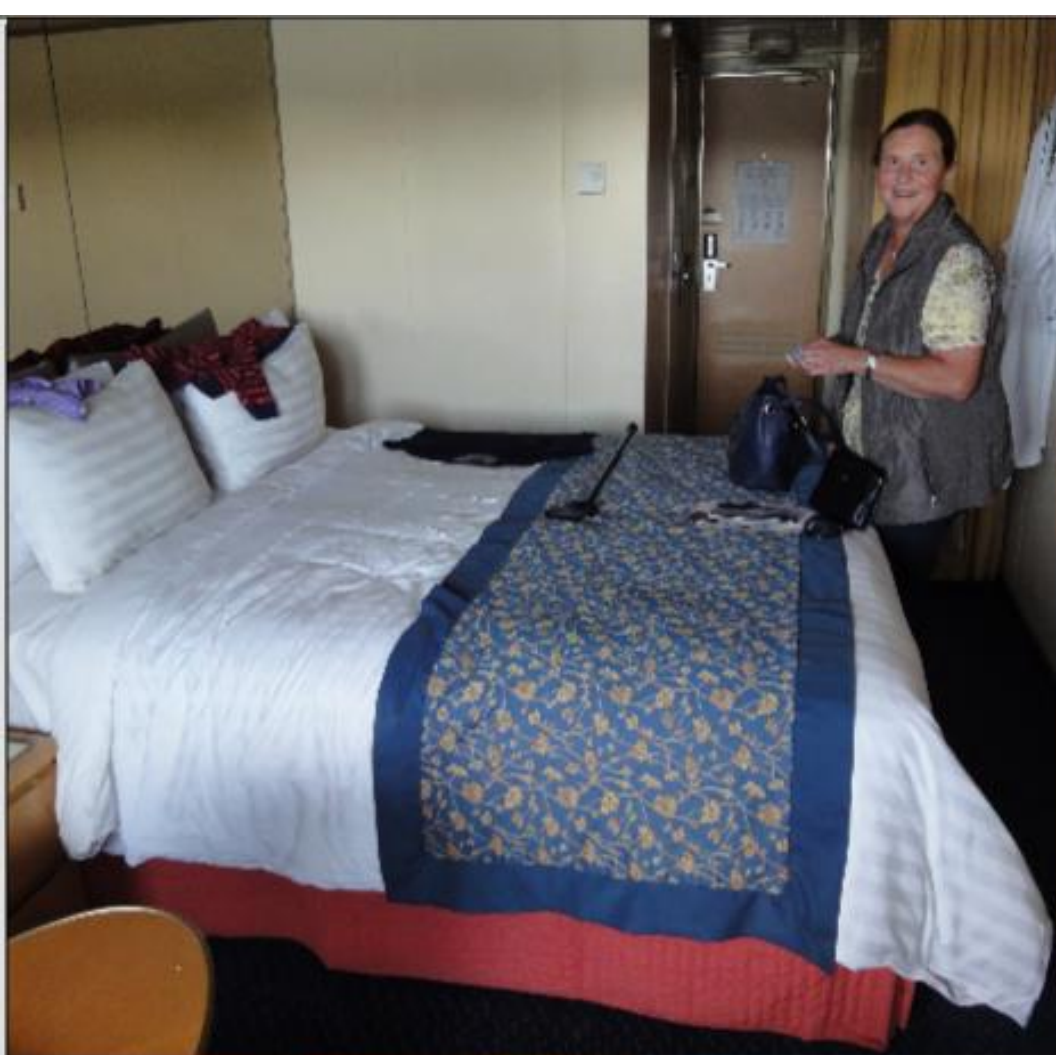
Lachse





**Vancouver bleibt zurück**





**An Bord MS Oosterdam**



[illegible]



# Ketchikan





# Ketchikan







## Creek Street Ketchikan







## Ketchikan







## Juneau







## Whale Watching bei Juneau







# Skagway



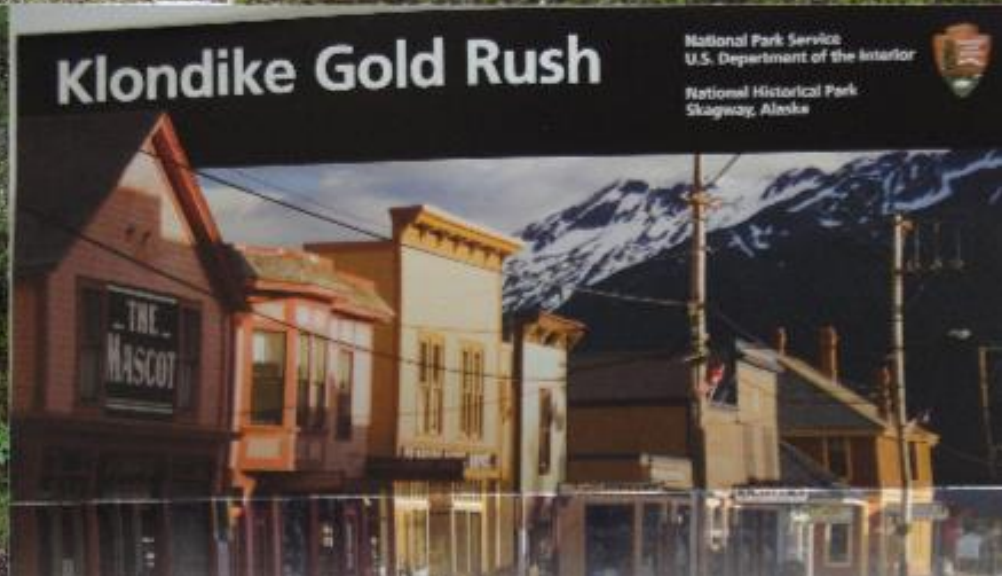








Skagway







Historic Gold Rush Trails from Skagway and Dyea

**SICHERHEIT ZUERST!**

Während die Goldfahrräder keine Regeln geben, müssen die Ampeln und die Verkehrszeichen beachtet werden:

- Alle Ampeln auf einem Platz gleichzeitig leuchten, nur eine der Zugfahrten.
- Nach dem Anhalten auf dem Platz muss gewartet werden, bis die Ampel wieder auf Grün wechselt.
- Nach dem Anhalten muss sofort die Automatische Einfahrt betätigt werden, um die Fahrt zu beenden.
- Es gibt Ampeln, die nur von einer Seite aus gesehen werden können, um die Einfahrt zu verhindern.
- Nach dem Anhalten muss sofort die Automatische Einfahrt betätigt werden, um die Fahrt zu beenden.
- Die Ampeln sind so positioniert, dass sie die Einfahrt verhindern.



# White Pass & Yukon Railway







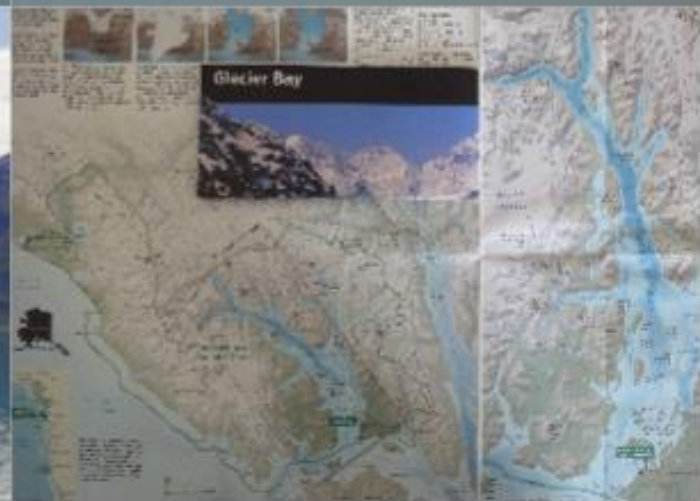
Glacier-Bay-Nationalpark







# Glacier-Bay-Nationalpark





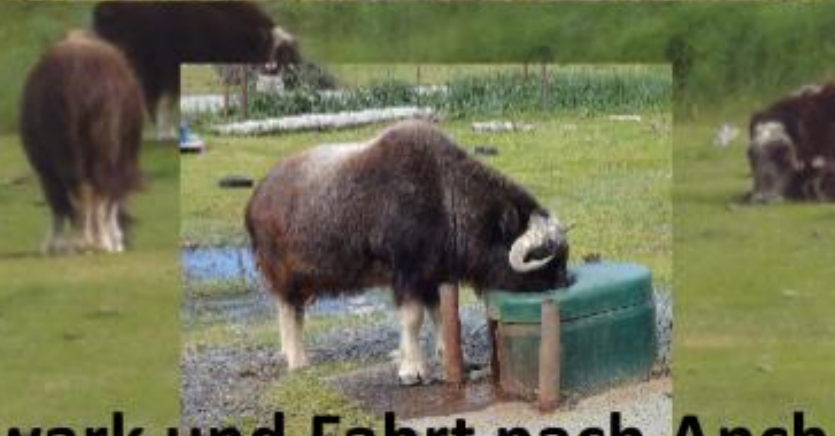
# Unser Schiff und stürmische See





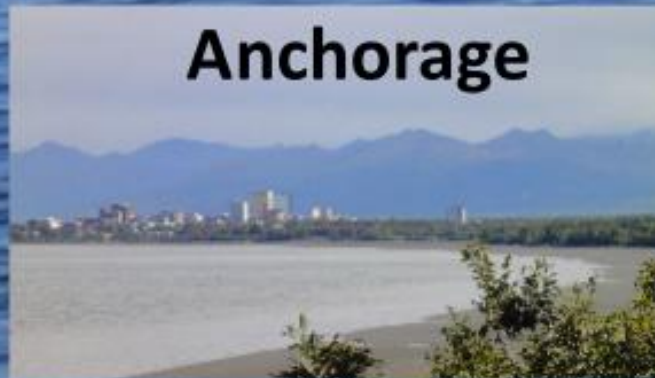






**Sewark und Fahrt nach Anchorage**





# Anchorage



















Population: 627,000  
Area: 586.412 Square Miles



Alcutian Islands



## Denali Nationalpark



ARCTIC CIRCLE



Seward.







## Monstertruck-Tour



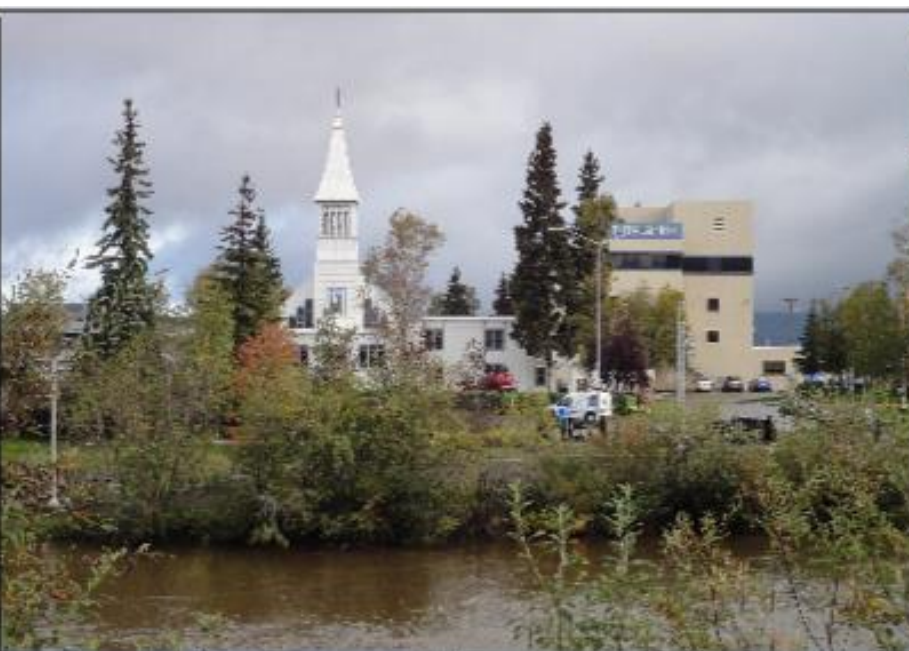




**Denali  
Weihnachten am 25. August**







### Hours Of Operation

11:00am-6:00pm MON-FRI  
12:00pm-5:00pm SATURDAY  
Closed Sunday

If it's 40°-below  
we are closed.

And warm.

At home...



## Fairbanks











## Pioneer Park Fairbanks





